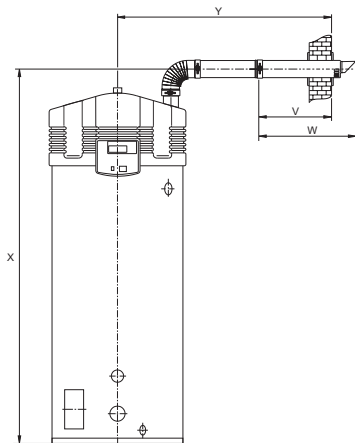


## Dimensions configurations BFC 28 / 30 / 50 / 60

Wall duct concentric

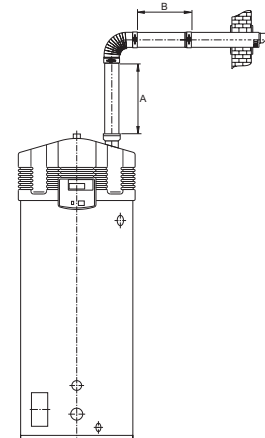


	BFC 28	BFC 30	BFC 50	BFC 60
	Ø100/150	Ø100/150	Ø100/150	Ø100/150
V	550	550	550	550
W	725	790	790	790
X	1535	2075	2075	2075
Y	1460	1480	1480	1480
Y **	1010	1030	1030	1030

- Dimensions in mm
- \*\* Dimensions without concentric tube between the bend and the wall duct

**Note:**  
Horizontal flue runs must be installed with a fall of at least 5cm per metre

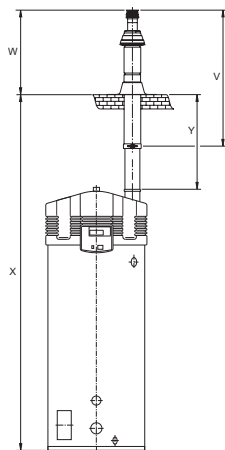
Wall duct concentric



	BFC 28		BFC 30		BFC 50		BFC 60	
	min.	max.	min.	max.	min.	max.	min.	max.
A	0	40000	0	40000	0	40000	0	40000
B	0	40000	0	40000	0	40000	0	40000
A+B	< 40000		< 40000		< 40000		< 40000	
bends	max. 7x45°/90°		max. 7x45°/90°		max. 7x45°/90°		max. 7x45°/90°	

- Dimensions in mm

Roof duct concentric

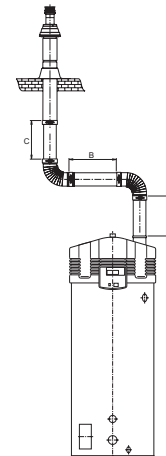


	BFC 28	BFC 30	BFC 50	BFC 60
	Ø100/150	Ø100/150	Ø100/150	Ø100/150
V	1305	1500	1500	1500
W	680	1035	1035	1035
X	2965	3325	3325	3325
X ***	2015	2375	2375	2375
Y	1575	1415	1415	1415
Y ***	625	465	465	465

- Dimensions in mm
- \*\*\* Dimensions without concentric tube between the bend and the wall duct

**Note:**  
Horizontal flue runs must be installed with a fall of at least 5cm per metre

Roof duct concentric

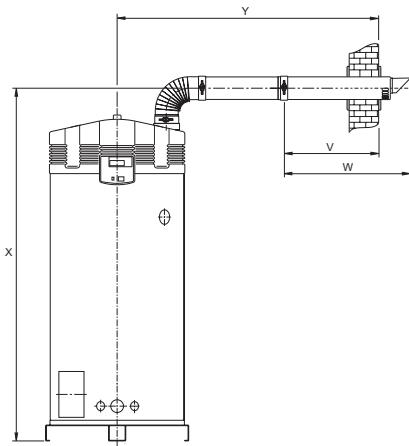


	BFC 28		BFC 30		BFC 50		BFC 60	
	min.	max.	min.	max.	min.	max.	min.	max.
A	0	40000	0	40000	0	40000	0	40000
B	0	40000	0	40000	0	40000	0	40000
C	0	40000	0	40000	0	40000	0	40000
A+B+C	< 40000		< 40000		< 40000		< 40000	
bends	max. 7x45°/90°		max. 7x45°/90°		max. 7x45°/90°		max. 7x45°/90°	

- Dimensions in mm

# Dimensions configurations BFC 80 / 100 / 120

Wall duct concentric

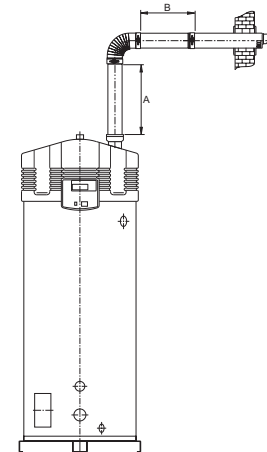


	BFC 80	BFC 100	BFC 120
	Ø130/200	Ø130/200	Ø130/200
V	640	640	640
W	940	940	940
X	2230	2230	2230
Y	1620	1620	1620
Y **	1170	1170	1170

• Dimensions in mm  
 \*\* Dimensions without concentric tube between the bend and the wall duct

**Note:**  
 Horizontal flue runs must be installed with a fall of at least 5cm per metre

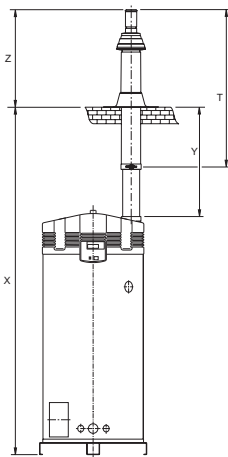
Wall duct concentric



	BFC 80		BFC 100		BFC 120	
	min.	max.	min.	max.	min.	max.
A	0	15000	0	15000	0	15000
B	0	15000	0	15000	0	15000
A+B	< 15000		< 15000		< 15000	
bends	max. 4x45°/90°		max. 4x45°/90°		max. 4x45°/90°	

• Dimensions in mm

Roof duct concentric



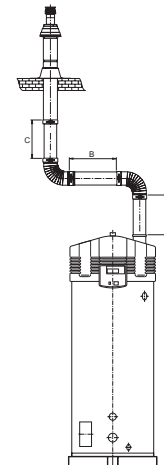
	BFC 80	BFC 100	BFC 120
	Ø130/200	Ø130/200	Ø130/200
V	1730	1730	1730
W	1120	1120	1120
X	3620	3620	3620
X ***	2670	2670	2670
Y	1560	1560	1560
Y ***	610	610	610

• Dimensions in mm  
 \*\*\* Dimensions without concentric tube between the bend and the wall duct

**Note:**  
 Horizontal flue runs must be installed with a fall of at least 5cm per metre

\* The SGS is delivered on a metal pallet, the height can vary

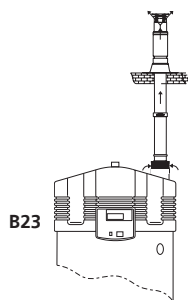
Roof duct concentric



	BFC 80		BFC 100		BFC 120	
	min.	max.	min.	max.	min.	max.
A	0	15000	0	15000	0	15000
B	0	15000	0	15000	0	15000
C	0	15000	0	15000	0	15000
A+B+C	< 15000		< 15000		< 15000	
bends	max. 4x45°/90°		max. 4x45°/90°		max. 4x45°/90°	

• Dimensions in mm

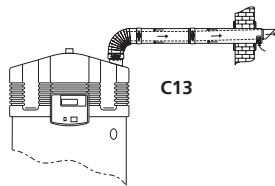
# Materials BFC category B23 incl. art.no.



CATEGORY B23							
Description	BFC 28 Ø100/150	BFC 30 Ø100/150	BFC 50 Ø100/150	BFC 60 Ø100/150	BFC 80 Ø130/200	BFC 100 Ø130/200	BFC 120 Ø130/200
Air inlet basket	0304872	0304872	0304872	0304872	0307176	0307176	0307176
Roof flue terminal	0305040	0305040	0305040	0305040	0307175	0307175	0307175
Flange roof terminal	0307173	0307173	0307173	0307173	0307174	0307174	0307174

From september 1st 2009, the BFC 28 is standard equipped with Ø100/150. An adapter from Ø80/125 is available (Art. No. 0305009).

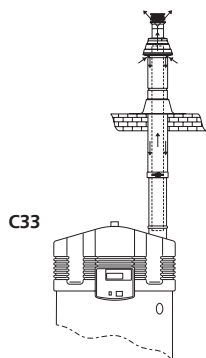
# Materials BFC category C13 incl. art.no.



CATEGORY C13							
Description	BFC 28 Ø100/150	BFC 30 Ø100/150	BFC 50 Ø100/150	BFC 60 Ø100/150	BFC 80 Ø130/200	BFC 100 Ø130/200	BFC 120 Ø130/200
Wall flue terminal	0302504	0302504	0302504	0302504	0311465	0311465	0311465
Wall flue terminal set*	0302505	0302505	0302505	0302505	0302313	0302313	0302313
Conc. bend 45°	0311454	0311454	0311454	0311454	0311455	0311455	0311455
Conc. bend 90°	0302502	0302502	0302502	0302502	0311456	0311456	0311456
Conc. tube 500 mm	0302499	0302499	0302499	0302499	0302301	0302301	0302301
Conc. tube 1000 mm	0311450	0311450	0311450	0311450	0311452	0311452	0311452
Conc. tube 1500 mm	0311451	0311451	0311451	0311451	0311453	0311453	0311453
Clamping strip Y-piece	0302506	0302506	0302506	0302506	0302305	0302305	0302305
Adapter conc./conc.	0306188 (Ø100/150 - Ø130/200)	0306188 (Ø100/150 - Ø130/200)	0306188 (Ø100/150 - Ø130/200)	0306188 (Ø100/150 - Ø130/200)	0306188 (Ø100/150 - Ø130/200)	0306188 (Ø100/150 - Ø130/200)	0306188 (Ø100/150 - Ø130/200)
Adapter conc./par.	0304204 (Ø100/150 - 2xØ100)	0304204 (Ø100/150 - 2xØ100)	0304204 (Ø100/150 - 2xØ100)	0304204 (Ø100/150 - 2xØ100)	0309605 (Ø130/200 - 2xØ130)	0309605 (Ø130/200 - 2xØ130)	0309605 (Ø130/200 - 2xØ130)
	0307135 (Ø100/150 - 2xØ130)	0307135 (Ø100/150 - 2xØ130)	0307135 (Ø100/150 - 2xØ130)	0307135 (Ø100/150 - 2xØ130)	-	-	-
Adapter par./conc.	0307142 (2xØ100 - Ø100/150)	0307142 (2xØ100 - Ø100/150)	0307142 (2xØ100 - Ø100/150)	0307142 (2xØ100 - Ø100/150)	-	-	-
Measurement unit	0303854 (Ø100/150)	0303854 (Ø100/150)	0303854 (Ø100/150)	0303854 (Ø100/150)	0303855 (Ø130/200)	0303855 (Ø130/200)	0303855 (Ø130/200)

\* incl. 2 wall flanges and clamping strip.

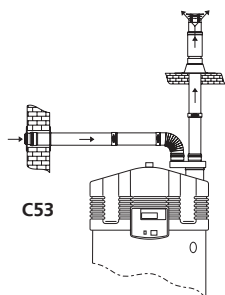
# Materials BFC category C33 incl. art.no.



CATEGORY C33							
Description	BFC 28 Ø100/150	BFC 30 Ø100/150	BFC 50 Ø100/150	BFC 60 Ø100/150	BFC 80 Ø130/200	BFC 100 Ø130/200	BFC 120 Ø130/200
Roof flue terminal	0311463	0311463	0311463	0311463	0311464	0311464	0311464
Roof flue terminal set*	0311458	0311458	0311458	0311458	0306390	0306390	0306390
Flange roof terminal	0302509	0302509	0302509	0302509	0302328	0302328	0302328
Conc. bend 45°	0311454	0311454	0311454	0311454	0311455	0311455	0311455
Conc. bend 90°	0302502	0302502	0302502	0302502	0311456	0311456	0311456
Conc. tube 500 mm	0302499	0302499	0302499	0302499	0302301	0302301	0302301
Conc. tube 1000 mm	0311450	0311450	0311450	0311450	0311452	0311452	0311452
Conc. tube 1500 mm	0311451	0311451	0311451	0311451	0311453	0311453	0311453
Clamping strip Y-piece	0302506	0302506	0302506	0302506	0302305	0302305	0302305
Adapter conc./conc.	0306188 (Ø100/150 - Ø130/200)	0306188 (Ø100/150 - Ø130/200)	0306188 (Ø100/150 - Ø130/200)	0306188 (Ø100/150 - Ø130/200)	0306188 (Ø100/150 - Ø130/200)	0306188 (Ø100/150 - Ø130/200)	0306188 (Ø100/150 - Ø130/200)
Adapter conc./par.	0304204 (Ø100/150 - 2xØ100)	0304204 (Ø100/150 - 2xØ100)	0304204 (Ø100/150 - 2xØ100)	0304204 (Ø100/150 - 2xØ100)	0309605 (Ø130/200 - 2xØ130)	0309605 (Ø130/200 - 2xØ130)	0309605 (Ø130/200 - 2xØ130)
	0307135 (Ø100/150 - 2xØ130)	0307135 (Ø100/150 - 2xØ130)	0307135 (Ø100/150 - 2xØ130)	0307135 (Ø100/150 - 2xØ130)	-	-	-
Adapter par./conc.	0307142 (2xØ100 - Ø100/150)	0307142 (2xØ100 - Ø100/150)	0307142 (2xØ100 - Ø100/150)	0307142 (2xØ100 - Ø100/150)	-	-	-
Measurement unit	0303854 (Ø100/150)	0303854 (Ø100/150)	0303854 (Ø100/150)	0303854 (Ø100/150)	0303855 (Ø130/200)	0303855 (Ø130/200)	0303855 (Ø130/200)

\* incl. 2 wall flanges and clamping strip.

# Materials BFC category C53 incl. art.no.



CATEGORY C53							
Description	BFC 28 Ø100/150	BFC 30 Ø100/150	BFC 50 Ø100/150	BFC 60 Ø100/150	BFC 80 Ø130/200	BFC 100 Ø130/200	BFC 120 Ø130/200
Wall flue terminal set*	0305039 (Ø100)	0305039 (Ø100)	0305039 (Ø100)	0305039 (Ø100)	-	-	-
	0307178 (Ø130)	0307178 (Ø130)	0307178 (Ø130)	0307178 (Ø130)	0307178 (Ø130)	0307178 (Ø130)	0307178 (Ø130)
Roof flue terminal	0305040 (Ø100)	0305040 (Ø100)	0305040 (Ø100)	0305040 (Ø100)	0307175 (Ø130)	0307175 (Ø130)	0307175 (Ø130)
Flange roof terminal	0307173 (Ø100)	0307173 (Ø100)	0307173 (Ø100)	0307173 (Ø100)	0307174 (Ø160)	0307174 (Ø160)	0307174 (Ø160)
Adapter conc./par.	0304204 (Ø100/150 - 2xØ100)	0304204 (Ø100/150 - 2xØ100)	0304204 (Ø100/150 - 2xØ100)	0304204 (Ø100/150 - 2xØ100)	-	-	-
	0307135 (Ø100/150 - 2xØ130)	0307135 (Ø100/150 - 2xØ130)	0307135 (Ø100/150 - 2xØ130)	0307135 (Ø100/150 - 2xØ130)	0309605 (Ø130/200 - 2xØ130)	0309605 (Ø130/200 - 2xØ130)	0309605 (Ø130/200 - 2xØ130)

\* incl. 2 wall flanges.

From september 1st 2009, the BFC 28 is standard equipped with Ø100/150. An adapter from Ø80/125 is available (Art. No. 0305009).

# Additional flue gas discharge material BFC



## ROOF FLUE TERMINAL SET - CONCENTRIC (ALU)

Description	BFC 28	BFC 30	BFC 50	BFC 60	BFC 80	BFC 100	BFC 120
Ø 100 / 150	0311463	0311463	0311463	0311463	-	-	-
Ø 130 / 200	-	-	-	-	0311464	0311464	0311464

○ Incl. flange and concentric tube (1m)



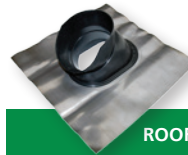
## ROOF FLUE TERMINAL - PARALLEL (ALU)

Description	BFC 28	BFC 30	BFC 50	BFC 60	BFC 80	BFC 100	BFC 120
Ø 100	0305040	0305040	0305040	0305040	-	-	-
Ø 130	-	-	-	-	0307175	0307175	0307175



## FLANGE - PAR. ROOF TERMINAL (ALU)

Description	BFC 28	BFC 30	BFC 50	BFC 60	BFC 80	BFC 100	BFC 120
Terminal							
Flange							
Ø 100	Ø 120	0307173	0307173	0307173	0307173	0307174	0307174



## ROOF TILE FOR CONC. ROOF TERMINAL (ALU)

Description	BFC 28	BFC 30	BFC 50	BFC 60	BFC 80	BFC 100	BFC 120
Terminal							
Angle							
Ø 100 / 150	25°-45°	0306017	0306017	0306017	0306017	-	-



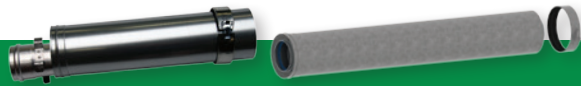
## WALL FLUE TERMINAL SET - CONCENTRIC (ALU)

Description	BFC 28	BFC 30	BFC 50	BFC 60	BFC 80	BFC 100	BFC 120
Ø 100 / 150	0302504	0302504	0302504	0302504	-	-	-
Ø 130 / 200	-	-	-	-	0311465	0311465	0311465

○ Incl. concentric tube (0.5m), bend (90°) and wall flanges

## ROOF DUCT EXTENSION PIPE

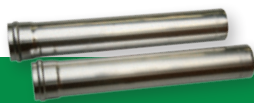
Description	BFC 28	BFC 30	BFC 50	BFC 60	BFC 80	BFC 100	BFC 120
Ø 100/150	450mm	0311291	0311291	0311291	0311291	-	-
Ø 100/150	950mm	0311292	0311292	0311292	0311292	-	-
Ø 130/200	450mm	-	-	-	-	0311293	0311293
Ø 130/200	950mm	-	-	-	-	0311294	0311294



## CONCENTRIC TUBE (ALU)

Description	BFC 28	BFC 30	BFC 50	BFC 60	BFC 80	BFC 100	BFC 120
Ø 100 / 150	L = 500 mm	0302499	0302499	0302499	0302499	-	-
Ø 100 / 150	L = 1000 mm	0311450	0311450	0311450	0311450	-	-
Ø 100 / 150	L = 1500 mm	0311451	0311451	0311451	0311451	-	-
Ø 130 / 200	L = 500 mm	-	-	-	-	0302301	0302301
Ø 130 / 200	L = 1000 mm	-	-	-	-	0311452	0311452
Ø 130 / 200	L = 1500 mm	-	-	-	-	0311453	0311453

○ Cutable



## TUBE - PARALLEL (ALU)

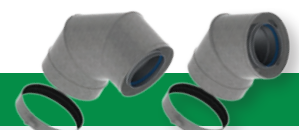
Description	BFC 28	BFC 30	BFC 50	BFC 60	BFC 80	BFC 100	BFC 120
Ø 100	L = 500 mm	0307160	0307160	0307160	0307160	-	-
Ø 100	L = 1000 mm	0307161	0307161	0307161	0307161	-	-
Ø 130	L = 500 mm	-	-	-	-	0306804	0306804
Ø 130	L = 1000 mm	-	-	-	-	0306802	0306802

○ Set of 2 pieces



## BEND - CONCENTRIC (ALU)

Description	BFC 28	BFC 30	BFC 50	BFC 60	BFC 80	BFC 100	BFC 120
Ø 100 / 150	Angle 90°	0302502	0302502	0302502	0302502	-	-
Ø 100 / 150	Angle 45°	0311454	0311454	0311454	0311454	-	-
Ø 130 / 200	Angle 90°	-	-	-	-	0311456	0311456
Ø 130 / 200	Angle 45°	-	-	-	-	0311455	0311455



# Additional flue gas discharge material BFC



## BEND - PARALLEL (ALU)

Description		BFC 28	BFC 30	BFC 50	BFC 60	BFC 80	BFC 100	BFC 120
Ø 100	Angle 45°	0310197	0310197	0310197	0310197	-	-	-
Ø 100	Angle 87/90°	0307164	0307164	0307164	0307164	-	-	-
Ø 130	Angle 87/90°	-	-	-	-	0306805	0306805	0306805
Ø 130	Angle 45°	-	-	-	-	0308026	0308026	0308026



## T-CONCENTRIC TUBE (ALU)

Description	BFC 28	BFC 30	BFC 50	BFC 60	BFC 80	BFC 100	BFC 120
Ø 100 / 150	0305244	0305244	0305244	0305244	-	-	-
Ø 130 / 200	-	-	-	-	0307488	0307488	0307488



## AIR INLET BASKET (ALU)

Description	BFC 28	BFC 30	BFC 50	BFC 60	BFC 80	BFC 100	BFC 120
Ø 100 / 150	0304872	0304872	0304872	0304872	-	-	-
Ø 130 / 200	-	-	-	-	0307176	0307176	0307176



## ADAPTER - CONC. TO PAR. (ALU)

Description		BFC 28	BFC 30	BFC 50	BFC 60	BFC 80	BFC 100	BFC 120
from	to							
Ø 100 / 150	2 x Ø 100	0304204	0304204	0304204	0304204	-	-	-
Ø 130 / 200	2 x Ø 130	-	-	-	-	0309605	0309605	0309605



## ADAPTER - CONC. TO CONC. (ALU)

Description		BFC 28	BFC 30	BFC 50	BFC 60	BFC 80	BFC 100	BFC 120
from	to							
Ø 100 / 150	Ø 80 / 125	0309660	-	-	-	-	-	-
Ø 100 / 150	Ø 130 / 200	0306188	0306188	0306188	0306188	0306188	0306188	0306188



## ADAPTER - PAR. TO CONC. (PP)

Description		BFC 28	BFC 30	BFC 50	BFC 60	BFC 80	BFC 100	BFC 120
from	to							
2 x Ø 100	1 x Ø 100 / 150	0307142	0307142	0307142	0307142	-	-	-
2 x Ø 130	1 x Ø 200	-	-	-	-	0306801	0306801	0306801



## ADAPTER - PAR. TO PAR. (ALU)

Description		BFC 28	BFC 30	BFC 50	BFC 60	BFC 80	BFC 100	BFC 120
from	to							
Ø 100	Ø 130	0307168	0307168	0307168	0307168	-	-	-
Ø 130	Ø 150	-	-	-	-	0307170	0307170	0307170



## CLAMPING STRIP - Y-PIECE WITH TUBE (ALU)

Description	BFC 28	BFC 30	BFC 50	BFC 60	BFC 80	BFC 100	BFC 120
Ø 154	0304199	0304199	0304199	0304199	0304199	0304199	0304199



## CLAMPING STRIP - TUBE WITH TUBE (ALU)

Description	BFC 28	BFC 30	BFC 50	BFC 60	BFC 80	BFC 100	BFC 120
Ø 150	0302506	0302506	0302506	0302506	-	-	-
Ø 200	-	-	-	-	0302305	0302305	0302305



## FLANGE - CONC. ROOF TERMINAL (ALU)

Description		BFC 28	BFC 30	BFC 50	BFC 60	BFC 80	BFC 100	BFC 120
Terminal	Flange							
Ø 100/150	Ø 170	0302509	0302509	0302509	0302509	-	-	-
Ø 130/200	Ø 210	-	-	-	-	0302328	0302328	0302328



## MEASUREMENT UNIT - CONCENTRIC (ALU)

Description	BFC 28	BFC 30	BFC 50	BFC 60	BFC 80	BFC 100	BFC 120
Ø 100 / 150	0303854	0303854	0303854	0303854	-	-	-
Ø 130 / 200	-	-	-	-	0303855	0303855	0303855